

# OUR SUPPORTERS & PARTNERS



**HIMALAYAN TRUST** NEW ZEALAND



*Sir Edmund Hillary*  
Stiftung Deutschland e. V.

**Naulekh (Poyan) Foundation**  
Switzerland

**Hillary Foundation**  
of USA



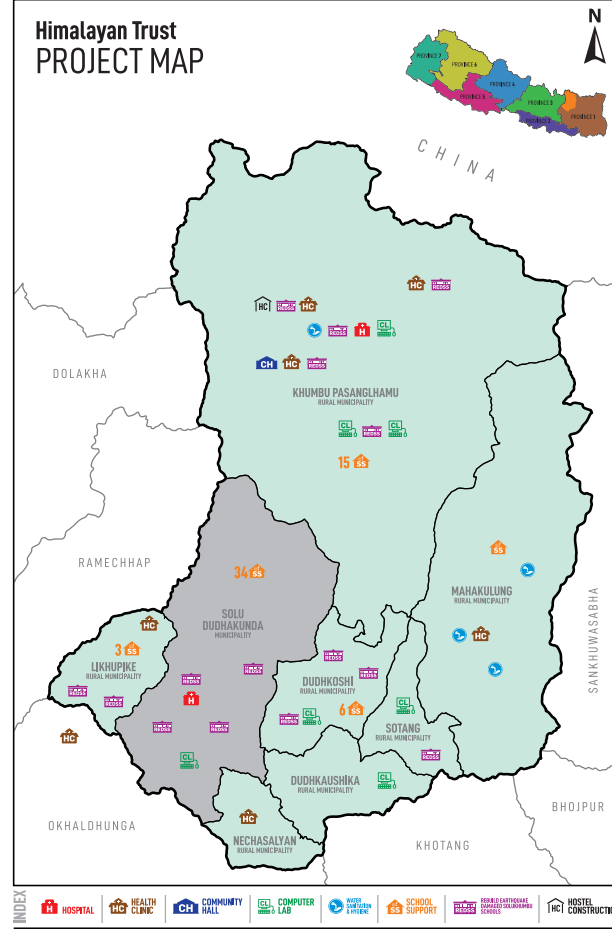
FOUNDATION BENOIT CHAMOUX

**Reinhold Messner Mountain Foundation**



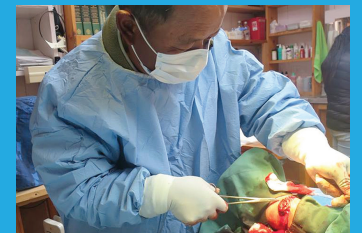
Forgotten Sherpa of Nepal Trust

## Himalayan Trust PROJECT MAP



## WHAT YOU CAN DO

**Himalayan Trust** is looking to extend its services to those areas of the Everest region and wider Nepal that are still deprived of basic necessities such as good education, proper healthcare, decent housing, food security, clothing, and shelter. You too can be a part of this noble cause by helping us raise funds or by supporting us through donations. With your participation, goodwill, and encouragement, we hope to continue making a difference in the lives of Sherpa people, other ethnic groups and keep the legacy of Sir Ed alive.



WE SUPPORT

## SUSTAINABLE DEVELOPMENT GOALS

**3** GOOD HEALTH AND WELL-BEING

**4** QUALITY EDUCATION

**5** GENDER EQUALITY

**6** CLEAN WATER AND SANITATION

FOR MORE DETAILS, PLEASE CONTACT

### HIMALAYAN TRUST

Dilli Bazar, P.O.Box: 224, Kathmandu, Nepal

Tel: +977-1-4412168, 4414750

Email: [info@himalayantrust.org.np](mailto:info@himalayantrust.org.np)

Website: [www.himalayantrust.org.np](http://www.himalayantrust.org.np)

SERVING THE PEOPLE OF HIMALAYA SINCE 1960

## INTRODUCTION

Himalayan Trust is one of the oldest non-profit organisations working in Solukhumbu, Nepal. It was founded by Sir Edmund Hillary in 1960 to help the people of Everest region, and registered as Himalayan Trust Nepal under the Law of Government of Nepal in 2007. HT has been helping the local people of Solukhumbu in the field of Education, Health Care, Environment, Culture and Livelihood for over 50 years.

HT has built 27 schools, 2 hospitals, and numerous clinics in the Everest region. It now provides teaching material support to more than 60 schools of the Everest region. In addition to supporting and maintaining schools and hospitals, HT is involved in preserving and promoting Sherpa culture, raising awareness on environmental issues, improving the livelihood of local people, responding to disasters with emergency relief programmes, and facilitating many other developmental programme activities.

## VISION

Himalayan Trust Nepal is dedicated to achieving holistic community-led sustainable mountain development guided by the vision of Sir Edmund Hillary and his Sherpa friends in the Everest region.

## MISSION

Himalayan Trust Nepal supports Education, Health, Culture, Environment and Livelihood programmes through an inclusive, innovative and locally-driven approach.

"Achievements are important and I have reveled in a number of good adventures, but far more worthwhile are the tasks I have been able to carry out for my friends in the Himalayas. They, too, have been great challenges in a different way – building mountain airfields and schools, hospitals and clinics, and renewing remote Buddhist monasteries. These are the projects that I will always remember."

Sir Edmund Hillary  
View from the Summit



## EDUCATION SECTOR

- School-Based Teacher Training for Primary Teachers
- Providing Scholarships for High School & College Students
- Additional Teacher Support
- Rebuilding Earthquake-Damaged Solukhumbu Schools (REDSS)
- Managing Early Child Education Development (ECED)
- Fostering Mother Tongue Education (MTE)
- Water, Sanitation, & Hygiene (WaSH) Programmes in Schools
- Computer Lab Establishment.
- School Library Support



## HEALTH SECTOR

- Operating Hospitals & Clinics
- Supplying Medicines to Hospitals & Clinics
- Strengthening Existing Health Services
- Conducting Research on Health Related Issues
- Developing Clean Drinking Water for Rural Areas



## ENVIRONMENT SECTOR

- Supporting Reforestation Programme in Sagarmatha National Park & Buffer Zone
- Conducting Research in Forestry, Wildlife, Climate Change, Tourism & Livelihood
- Helping Preserve & Strengthen Traditional Governance & Management Practices of Natural Resources
- Supporting Eco-Clubs in Local Schools
- Coordinating with Various Governmental & Non-Governmental Conservation Groups
- Developing Sustainable & Locally Appropriate Waste Management Solutions



## LIVELIHOOD SECTOR

- Farming Training in Solukhumbu Region
- Linking Local Farmers to Micro-Finance & Small-Scale Grants
- Creating Markets & Transport Linkage for Farmers
- Introducing Energy-Efficient Alternatives for Local Lodges
- Providing Vocational & Skill-Based Training for Income Generation.



## EARTHQUAKE RESPONSE 2015

A total of 992 tarpaulins, along with sleeping bags and tents, were sent to earthquake victims in the Solukhumbu region. Relief materials were distributed in coordination with other local stakeholders. Rebuilt 70 classrooms in 15 schools.



## CULTURE SECTOR

- Retaining & Reviving Local Languages & Cultural Heritage
- Conserving & Restoring Cultural Artefacts
- Encouraging Community Participation in Promoting Culture

Integrated Development of Health, Education, Environment & Culture in the Himalayan Region of Solukhumbu District

### TIMELINE OF MAJOR ACHIEVEMENTS

1961

Built Khumjung School

1963

Built Pangboche, Junbesi & Thame School

1964

Built Lukta Airstrip

1966

Built Khunde Hospital

1973

Built Salleri High School

1975

Built Phaplu Hospital

1986

Built Kharikhola Middle School

2015

Launched Nepal Earthquake Appeal Programmes

2017

Re-built 70 Classrooms in 15 Schools